

8th annual scientific meeting

Top Models...

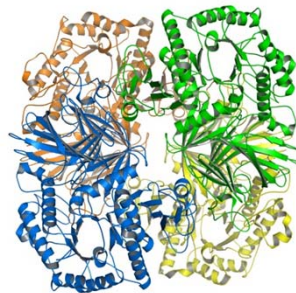
Deciphering Biology Using Models

June 5, 2015

Domaine Lyon St Joseph, Sainte-Foy-lès-Lyon

Keynote Lectures
Chantal Rabourdin-Combe:

Michèle Crozatier,
Centre de Biologie du développement, Toulouse
Cyril Zipfel
The Sainsbury Laboratory, Norwich, UK



Flash poster R&D

- ✓ New murine models obtained by *in vivo* genome editing by CRISPR-Cas9
- ✓ OpenSPIM
- ✓ Analysis of Autophagy by ImageStream X
- ✓ New *in vitro* cell free system combined with mass spectrometry to highly decipher neo-synthesized proteins

SFR BioSciences speakers

Mohammed Bendahmane, RDP
Sophie Pantalacci, LBMC
Hugo Aguilaniu, IGFL
Viktor Volchkov, CIRI
Frédéric Arnaud, RPC
Dominique Sigaud-Roussel, LBTI
S. Bertaud/F. Ruggiero, IGFL



Photos Caroline et Vincent Moncorgé©