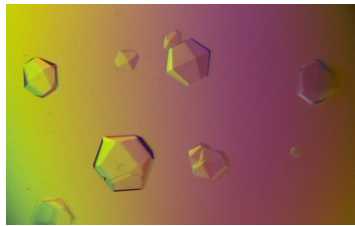




*SFR Scientific Day 2023
Protein studies from atomic to
integrated scales
June 23rd 2023
Château de Montchat, 69003 Lyon*



- 8:30 Welcome
- 9:00 Introduction to the SFR - Y. Leverrier, SFR Director
- 9:10 Introduction to Protein Science Facility (PSF) - V Gueguen-Chaignon & A. Page
- 9:20 Enzymatic and structural characterization of enzymes from the opportunistic pathogen *Candida glabrata* - L. Ballut (MMSB)
- 9:40 Targeting protein-protein interactions with nanobodies : an efficient way to modulate collagen fibrillogenesis - S. Le Goff (CNRS UMR5305, LBTI)
- 10:00 SPR measurements of affinities between macromolecules - D. Cluet (ENS, LBMC)
- 10:20 Proteomic analysis of the shift to competence in *Legionella pneumophila* - L. Attaiech (CIRI)
- 10:40 Coffee break
- 11:05 Keynote lecture: Protein dynamics driving circadian physiology - M. Robles (Biomedical Center & Institute of Medical Psychology, Munich, Germany)
- 12:00 Proteomic-driven identification of receptors involved in edge-based growth control - L. Elliott (RDP)
- 12:30 Lunch Break, coffee, poster and exhibition tables
- 14:00 Company Flash Talks
- 14:30 4 Flash Talks Technology Development SFR-funded projects
- 15:00 Keynote lecture: Regulation of Lytic Machineries in the Bacterial Cell Wall. A structural approach - J. Hermoso (Instituto Quimica-Fisica, CSIC, Spain)
- 15:55 A Nanobody-based approach for capturing interactomes of specific dimeric protein complexes in live cells - N. Hajj Sleiman (IGFL)
- 16:15 Proteomics, lipidomics, and the cell biology of virus entry - P.Y. Lozach (IVPC)
- 16:35 Concluding remarks, coffee posters, and exhibition tables
- 17:00 End

Protein
Sciences

Structural
Approaches

Proteomic

Protein
Interactions

CliniSciences

ThermoFisher
SCIENTIFIC

GENOBIOS

EUROMEDEX

abberior



BD

ENS
ENS DE LYON

UJF
Lyon 1

cnrs

Inserm
La science pour la santé
From science to health