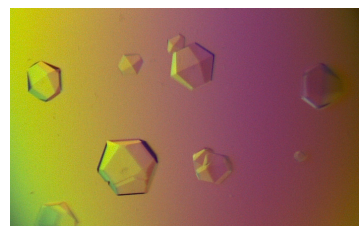




*SFR Scientific Day 2023
Protein studies from atomic to
integrated scales
June 23rd 2023
Château de Montchat, 69003 Lyon*



Protein Sciences

8:30 Welcome

9:00 Introduction to the SFR - Y. Leverrier, SFR Director

9:10 Introduction to Protein Science Facility (PSF) - V Gueguen-Chaignon

9:20 Enzymatic and structural characterization of enzymes from the opportunistic pathogen *Candida glabrata* - L. Ballut (MMSB)

Structural
Approaches

9:40 Targeting protein-protein interactions with nanobodies : an efficient way to modulate collagen fibrillogenesis - S. Le Goff (CNRS UMR5305, LBTI)

10:00 SPR measurements of affinities between macromolecules - D. Cluet (ENS, LBMC)

10:20 Proteomic analysis of the shift to competence in *Legionella pneumophila* - L. Attaiech (CIRI)

10:40 Coffee break

Proteomic

11:05 Keynote lecture: Regulation of Lytic Machineries in the Bacterial Cell Wall. A structural approach - J. Hermoso (Instituto Quimica-Fisica, CSIC, Spain)

12:00 Proteomic-driven identification of receptors involved in edge-based growth control - L. Elliott (RDP)

12:30 Lunch Break, coffee, poster and exhibition tables

14:00 Company Flash Talks : ThermoFisher Scientific & Bio-Rad

14:30 4 Flash Talks Technology Development SFR-funded projects

Protein
Interactions

15:00 Keynote lecture: Protein dynamics driving circadian physiology - M. Robles (Biomedical Center & Institute of Medical Psychology, Munich, Germany)

15:55 A Nanobody-based approach for capturing interactomes of specific dimeric protein complexes in live cells - N. Hajj Sleiman (IGFL)

16:15 Proteomics, lipidomics, and the cell biology of virus entry - P.Y. Lozach (IVPC)

16:35 Concluding remarks, coffee posters, and exhibition tables

17:00 End

